



ELECTRONIC COPY

LABORATORY GROWN DIAMOND REPORT

February 14, 2024	
IGI Report Number	LG621404652
Description	LABORATORY GROWN DIAMOND
Shape and Cutting Style	ROUND BRILLIANT
Measurements	9.98 - 10.01 X 6.07 MM

GRADING RESULTS

Carat Weight	3.72 CARATS
Color Grade	G
Clarity Grade	VS 2
Cut Grade	IDEAL

ADDITIONAL GRADING INFORMATION

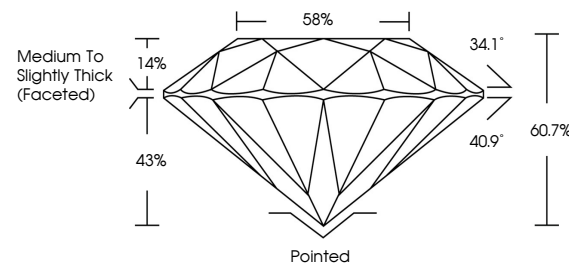
Polish	EXCELLENT
Symmetry	EXCELLENT
Fluorescence	NONE
Inscription(s)	LG621404652

Comments: This Laboratory Grown Diamond was created by Chemical Vapor Deposition (CVD) growth process and may include post-growth treatment.
Type IIa

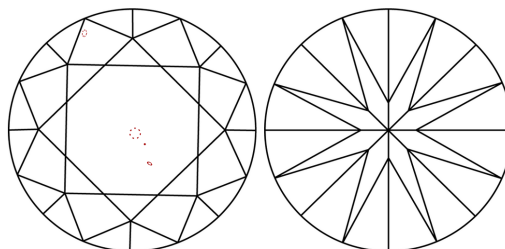
LABORATORY GROWN DIAMOND REPORT

LG621404652
Report verification at [igi.org](https://www.igi.org)

PROPORTIONS



CLARITY CHARACTERISTICS



KEY TO SYMBOLS

Red symbols indicate internal characteristics.
Green symbols indicate external characteristics.

LABORATORY GROWN
DIAMOND REPORT

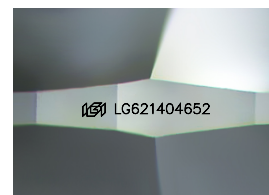
GRADING SCALES

CLARITY

IF	VVS ¹⁻²	VS ¹⁻²	SI ¹⁻²	I ¹⁻³
Internally Flawless	Very Very Slightly Included	Very Slightly Included	Slightly Included	Included

COLOR

D E F G H I J Faint Very Light Light



Sample Image Used



© IGI 2020, International Gemological Institute

FD - 10 20

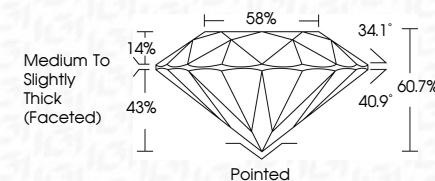
www.igi.org

LABORATORY GROWN DIAMOND REPORT

February 14, 2024	
IGI Report Number	LG621404652
Description	LABORATORY GROWN DIAMOND
Shape and Cutting Style	ROUND BRILLIANT
Measurements	9.98 - 10.01 X 6.07 MM

GRADING RESULTS

Carat Weight	3.72 CARATS
Color Grade	G
Clarity Grade	VS 2
Cut Grade	IDEAL



ADDITIONAL GRADING INFORMATION

Polish	EXCELLENT
Symmetry	EXCELLENT
Fluorescence	NONE
Inscription(s)	 LG-621404652

Comments: This Laboratory Grown Diamond was created by Chemical Vapor Deposition (CVD) growth process and may include post-growth treatment.
Type IIa



February 14, 2024
G Report No LG21404652
VIVID BRILLIANT
ROUND
98 - 10.01 X 6.07 MM
Color Weight
Color Grade
Clarity Grade
Cut Grade
Depth
Table
Girdle
Medium to Slightly Thick (Focused)
58%
VS 2
IDeAL
60.7%
3.72 CARATS
G
Poished
EXCELLENT
Symmetry
Fluorescence
Inscriptions(s)
NONE
(#) LG21404652
Comments:
The Laboratory Grown Diamond was created by Chemical Vapor Deposition (CVD) growth process and may include post-growth treatment.
Type IaA