



**ELECTRONIC COPY**

## LABORATORY GROWN DIAMOND REPORT

February 3, 2024	
IGI Report Number	LG620493147
Description	LABORATORY GROWN DIAMOND
Shape and Cutting Style	ROUND BRILLIANT
Measurements	9.37 - 9.42 X 5.71 MM

## GRADING RESULTS

Carat Weight	3.08 CARATS
Color Grade	G
Clarity Grade	VS 1
Cut Grade	IDEAL

### ADDITIONAL GRADING INFORMATION

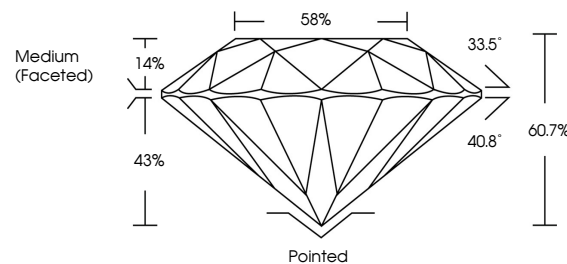
Polish	EXCELLENT
Symmetry	EXCELLENT
Fluorescence	NONE
Inscription(s)	15 LG620493147

Comments: This Laboratory Grown Diamond was created by Chemical Vapor Deposition (CVD) growth process and may include post-growth treatment.  
Type IIa

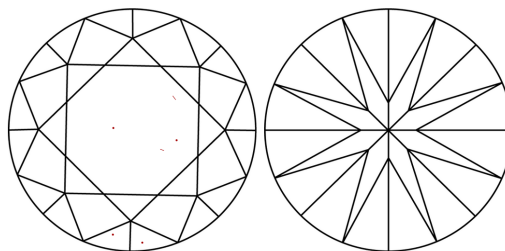
## LABORATORY GROWN DIAMOND REPORT

LG620493147  
Report verification at [igi.org](https://igi.org)

## PROPORTIONS



## CLARITY CHARACTERISTICS



## KEY TO SYMBOLS

Red symbols indicate internal characteristics.  
Green symbols indicate external characteristics.

LABORATORY GROWN  
DIAMOND REPORT

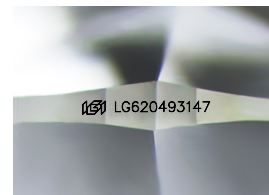
## GRADING SCALES

## CLARITY

IF	VVS <sup>1-2</sup>	VS <sup>1-2</sup>	SI <sup>1-2</sup>	I <sup>1-3</sup>
Internally Flawless	Very Very Slightly Included	Very Slightly Included	Slightly Included	Included

**COLOR**

D E F G H I J Faint Very Light Light



Sample Image Used



© IGI 2020, International Gemological Institute

FD - 10 20

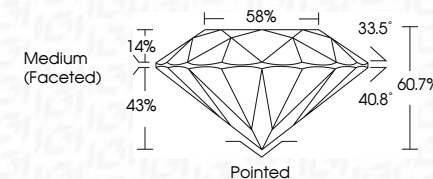
**www.igi.org**

## LABORATORY GROWN DIAMOND REPORT

February 3, 2024	
IGI Report Number	LG620493147
Description	LABORATORY GROWN DIAMOND
Shape and Cutting Style	ROUND BRILLIANT
Measurements	9.37 - 9.42 X 5.71 MM

## GRADING RESULTS

Carat Weight	3.08 CARATS
Color Grade	G
Clarity Grade	VS 1
Cut Grade	IDEAL



### ADDITIONAL GRADING INFORMATION

Polish	EXCELLENT
Symmetry	EXCELLENT
Fluorescence	NONE
Inscription(s)	(15) LG620493147

Comments: This Laboratory Grown Diamond was created by Chemical Vapor Deposition (CVD) growth process and may include post-growth treatment.  
Type IIa



IG

February 3, 2024	GI Report No. LG20406317	ROUND BRILLIANT	3.08 CARATS	G	VS 1	IDEAL	60.1%	58%	Medium (Faceted)	Ported	EXCELLENT	EXCELLENT	NONE	1691 LG20406317
			3.37 - 5.42 X 5.71 MM	Color Grade	Clarity Grade	Depth	Table	Girdle		Quiet	Polish	Symmetry	Fluorescence	Inscriptions(s)
			Carat Weight		Color	Car	Grade							
<p>Comments: This is a Fancy Crown Diamond was treated by Chemical Vapor Deposition (CVD) growth process and may include post-growth treatment.</p> <p>Type IIA</p>														