

ELECTRONIC COPY

LABORATORY GROWN DIAMOND REPORT

February 3, 2024	
IGI Report Number	LG620484990
Description	LABORATORY GROWN DIAMOND
Shape and Cutting Style	EMERALD CUT
Measurements	12.43 X 8.60 X 5.92 MM

GRADING RESULTS

Carat Weight	6.15 CARATS
Color Grade	G
Clarity Grade	VS 1

ADDITIONAL GRADING INFORMATION

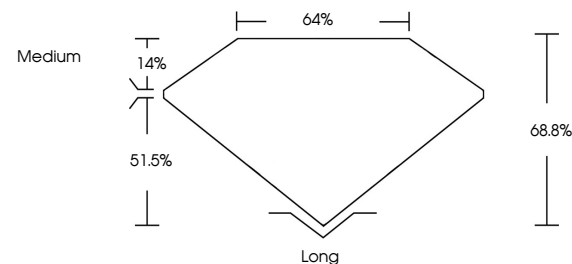
Polish	EXCELLENT
Symmetry	EXCELLENT
Fluorescence	NONE
Inscription(s)	 LG620484990

Comments: This Laboratory Grown Diamond was created by Chemical Vapor Deposition (CVD) growth process and may include post-growth treatment.
Type IIa

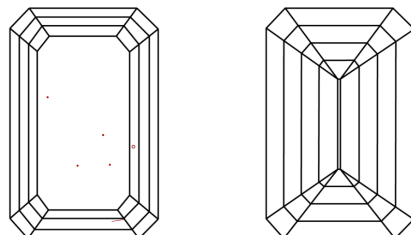
LABORATORY GROWN DIAMOND REPORT

LG620484990
Report verification at igi.org

PROPORTIONS



CLARITY CHARACTERISTICS



KEY TO SYMBOLS

Red symbols indicate internal characteristics.
Green symbols indicate external characteristics.

LABORATORY GROWN
DIAMOND REPORT

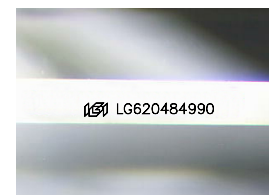
GRADING SCALES

CLARITY

IF	VVS ¹⁻²	VS ¹⁻²	SI ¹⁻²	I ¹⁻³
Internally Flawless	Very Very Slightly Included	Very Slightly Included	Slightly Included	Included

COLOR

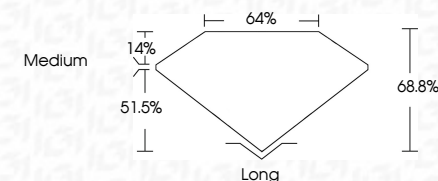
D E F G H I J Faint Very Light Light



Sample Image Used

LABORATORY GROWN DIAMOND REPORT

February 3, 2024	
IGI Report Number	LG620484990
Description	LABORATORY GROWN DIAMOND
Shape and Cutting Style	EMERALD CUT
Measurements	12.43 X 8.60 X 5.92 MM
GRADING RESULTS	
Carat Weight	6.15 CARATS
Color Grade	G
Clarity Grade	VS 1



ADDITIONAL GRADING INFORMATION

Polish	EXCELLENT
Symmetry	EXCELLENT
Fluorescence	NONE
Inscription(s)	(15) LG620484990

Comments: This Laboratory Grown Diamond was created by Chemical Vapor Deposition (CVD) growth process and may include post-growth treatment.
Type IIa



February 3, 2024
GI Report No LG620484990
EMERALD CITE

12.43 X 6.40 X 5.92 MM	Carat Weight	6.15 CARATS
	Color Grade	G
	Clarity Grade	VS 1
	Depth	68.8%
	Table	64%
	Girdle	Medium
	Culet	Long
	Polish	EXCELLENT
	Symmetry	EXCELLENT
	Fluorescence	NONE

Comments:
This Laboratory Grown Diamond was created by Chemical Vapor Deposition (CVD) growth process and may include post-growth treatment.