

ELECTRONIC COPY

LABORATORY GROWN DIAMOND REPORT

February 9, 2024	
IGI Report Number	LG620428105
Description	LABORATORY GROWN DIAMOND
Shape and Cutting Style	ROUND BRILLIANT
Measurements	9.52 - 9.56 X 5.75 MM

GRADING RESULTS

Carat Weight	3.19 CARATS
Color Grade	G
Clarity Grade	VS 1
Cut Grade	IDEAL

ADDITIONAL GRADING INFORMATION

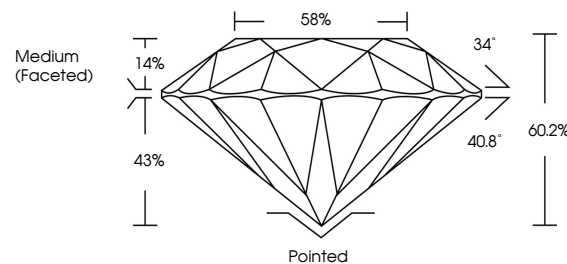
Polish	EXCELLENT
Symmetry	EXCELLENT
Fluorescence	NONE
Inscription(s)	15 LG620428105

Comments: This Laboratory Grown Diamond was created by Chemical Vapor Deposition (CVD) growth process and may include post-growth treatment.
Type IIa

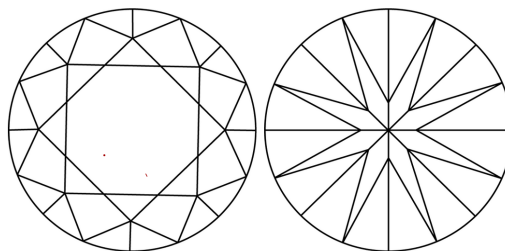
LABORATORY GROWN DIAMOND REPORT

LG620428105
Report verification at igi.org

PROPORTIONS



CLARITY CHARACTERISTICS



KEY TO SYMBOLS

Red symbols indicate internal characteristics.
Green symbols indicate external characteristics.

LABORATORY GROWN
DIAMOND REPORT

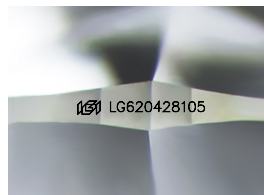
GRADING SCALES

CLARITY

IF	VVS ¹⁻²	VS ¹⁻²	SI ¹⁻²	I ¹⁻³
Internally Flawless	Very Very Slightly Included	Very Slightly Included	Slightly Included	Included

COLOR

D E F G H I J Faint Very Light Light



Sample Image Used



© IGI 2020, International Gemological Institute

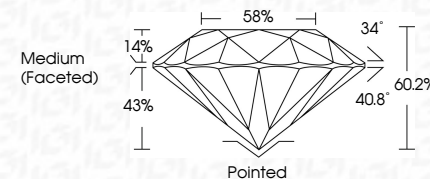
FD - 10 20

LABORATORY GROWN DIAMOND REPORT

February 9, 2024	
IGI Report Number	LG620428105
Description	LABORATORY GROWN DIAMOND
Shape and Cutting Style	ROUND BRILLIANT
Measurements	9.52 - 9.56 X 5.75 MM

GRADING RESULTS

Carat Weight	3.19 CARATS
Color Grade	G
Clarity Grade	VS 1
Cut Grade	IDEAL



ADDITIONAL GRADING INFORMATION

Polish	EXCELLENT
Symmetry	EXCELLENT
Fluorescence	NONE
Inscription(s)	15 LG 620428105

Comments: This Laboratory Grown Diamond was created by Chemical Vapor Deposition (CVD) growth process and may include post-growth treatment.
Type IIa



IG

February 9, 2024	Report No LG502628 105	ROUND BRILLIANT	9.52 - 9.55 X 5.75 MM	3.19 CARATS	G	VS 1	IDEAL	60.2%	59%	Medium Faceted	Pointed	EXCELLENT	EXCELLENT	NONE	461 LG502628 105
GI	Color Weight	Color Grade	Clarity Grade	Our Grade	Depth	Table	Girdle	Culet	Polish	Symmetry	Fluorescence	Inscriptions(s)	Comments: This is a Fancy Green Diamond was treated by Chemical Vapor Deposition (CVD) growth process and may include post-growth treatment. Type IIa		