



LABORATORY GROWN DIAMOND REPORT

GRADING RESULTS

ADDITIONAL GRADING INFORMATION

Comments: This Laboratory Grown Diamond was created by Chemical Vapor Deposition (CVD) growth process and may include post-growth treatment.
Type IIa

LG620415291
Report verification at igi.org

Medium (Faceted)

58%

15%

35.9°

43%

40.9°

61.5%

Pointed

Red symbols indicate internal characteristics.
Green symbols indicate external characteristics.

GRADING SCALES

IF	VVS ¹⁻²	VS ¹⁻²	SI ¹⁻²	I ¹⁻³
Internally Flawless	Very Very Slightly Included	Very Slightly Included	Slightly Included	Included

D E F G H I J Faint Very Light Light

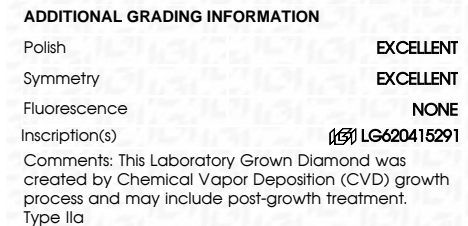
Sample Image Used



FD - 10 20

THIS DOCUMENT WAS PRODUCED WITH THE FOLLOWING SECURITY MEASURES: SPECIAL DOCUMENT PAPER, INK SCREENS, WATERMARK, BACKGROUND DESIGNS, HOLOGRAM AND OTHER SECURITY FEATURES NOT LISTED AND DO EXCEED DOCUMENT SECURITY INDUSTRY GUIDELINES.

GRADING RESULTS	
Carat Weight	3.89 CARATS
Color Grade	G
Clarity Grade	VS 2
Cut Grade	IDEAL



February 5, 2024	3.89 CARATS
Q Report No. LG204115291	G
ROUND BRILLIANT	VS 2
	IDEAL
	61.5%
	55%
	Medium (Faceted)
	Polished
	EXCELLENT
	EXCELLENT
	NONE
	lg2 LG204115291
10.09 - 10.16 x 6.22 MM	
Carat Weight	
Color Grade	
Clarity Grade	
Cut Grade	
Depth	
Table	
Grade	
Culet	
Polish	
Symmetry	
Fluorescence	
Inscriptions(s)	
Comments:	
<p>The Laboratory Grown Diamond was created by Chemical Vapor Deposition (CVD) growth process and may include post-growth treatment.</p> <p>type Iia</p>	