

**ELECTRONIC COPY**

## LABORATORY GROWN DIAMOND REPORT

February 6, 2024	
IGI Report Number	LG620415104
Description	LABORATORY GROWN DIAMOND
Shape and Cutting Style	ROUND BRILLIANT
Measurements	9.34 - 9.39 X 5.65 MM

## GRADING RESULTS

Carat Weight	3.02 CARATS
Color Grade	G
Clarity Grade	VS 1
Cut Grade	IDEAL

### ADDITIONAL GRADING INFORMATION

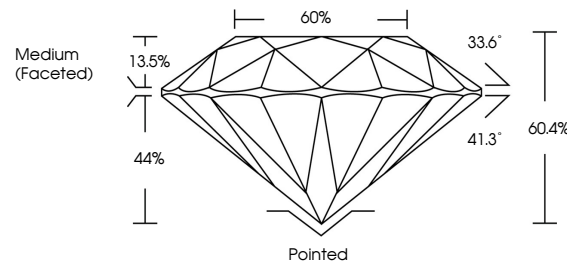
Polish	EXCELLENT
Symmetry	EXCELLENT
Fluorescence	NONE
Inscription(s)	LG620415104

Comments: This Laboratory Grown Diamond was created by Chemical Vapor Deposition (CVD) growth process and may include post-growth treatment.  
Type IIa

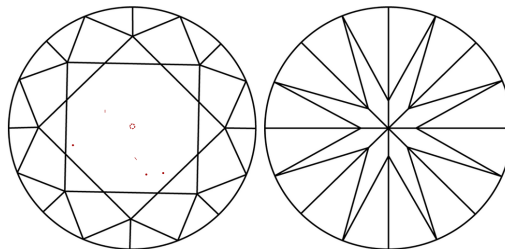
## LABORATORY GROWN DIAMOND REPORT

LG620415104  
Report verification at [igi.org](https://igi.org)

## PROPORTIONS



## CLARITY CHARACTERISTICS



## KEY TO SYMBOLS

Red symbols indicate internal characteristics.  
Green symbols indicate external characteristics.

LABORATORY GROWN  
DIAMOND REPORT

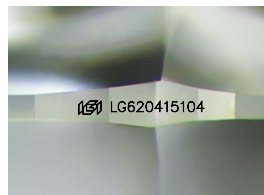
## GRADING SCALES

## CLARITY

IF	VVS <sup>1-2</sup>	VS <sup>1-2</sup>	SI <sup>1-2</sup>	I <sup>1-3</sup>
Internally Flawless	Very Very Slightly Included	Very Slightly Included	Slightly Included	Included

**COLOR**

D E F G H I J Faint Very Light Light



Sample Image Used



© IGI 2020, International Gemological Institute

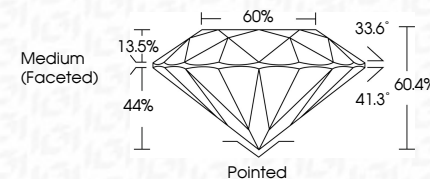
FD - 10 20

## LABORATORY GROWN DIAMOND REPORT

February 6, 2024	
IGI Report Number	LG620415104
Description	LABORATORY GROWN DIAMOND
Shape and Cutting Style	ROUND BRILLIANT
Measurements	9.34 - 9.39 X 5.65 MM

## GRADING RESULTS

Carat Weight	3.02 CARATS
Color Grade	G
Clarity Grade	VS 1
Cut Grade	IDEAL



### ADDITIONAL GRADING INFORMATION

Polish	EXCELLENT
Symmetry	EXCELLENT
Fluorescence	NONE
Inscription(s)	 LG620415104

Comments: This Laboratory Grown Diamond was created by Chemical Vapor Deposition (CVD) growth process and may include post-growth treatment.  
Type IIa



	February 6, 2024	
	GJ Report No LG620415104	
	ROUND BRILLIANT	
	3.02 CARATS	
	VSI	
	IDEAL	
	60.4%	
	60%	
	Medium (Faceted)	
	Pinked	
	EXCELLENT	
	EXCELLENT	
	NONE	
	#GJ LG620415104	
	Comments:	
	This Natural Color Grown Diamond was treated by Chemical Vapor Deposition (CVD) growth process and may include post-growth treatment.	
	Type IIA	