



ELECTRONIC COPY

LABORATORY GROWN DIAMOND REPORT

February 5, 2024	
IGI Report Number	LG620415071
Description	LABORATORY GROWN DIAMOND
Shape and Cutting Style	ROUND BRILLIANT
Measurements	10.84 - 10.86 X 6.57 MM

GRADING RESULTS

Carat Weight	4.71 CARATS
Color Grade	G
Clarity Grade	VS 2
Cut Grade	IDEAL

ADDITIONAL GRADING INFORMATION

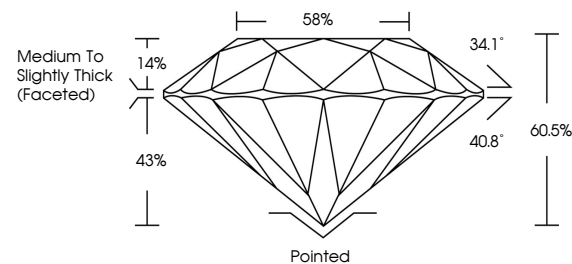
Polish	EXCELLENT
Symmetry	EXCELLENT
Fluorescence	NONE
Inscription(s)	 LG620415071

Comments: This Laboratory Grown Diamond was created by Chemical Vapor Deposition (CVD) growth process and may include post-growth treatment.
Type IIa

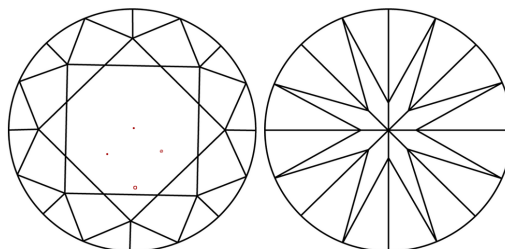
LABORATORY GROWN DIAMOND REPORT

LG620415071
Report verification at igi.org

PROPORTIONS



CLARITY CHARACTERISTICS



KEY TO SYMBOLS

Red symbols indicate internal characteristics.
Green symbols indicate external characteristics.

LABORATORY GROWN
DIAMOND REPORT

GRADING SCALES

CLARITY

IF	VVS ¹⁻²	VS ¹⁻²	SI ¹⁻²	I ¹⁻³
Internally Flawless	Very Very Slightly Included	Very Slightly Included	Slightly Included	Included

COLOR

D E F G H I J Faint Very Light Light



Sample Image Used

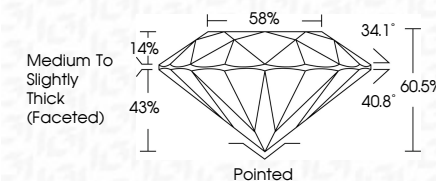


© IGI 2020, International Gemological Institute

FD - 10 20

LABORATORY GROWN DIAMOND REPORT

February 5, 2024	
IGI Report Number	LG620415071
Description	LABORATORY GROWN DIAMOND
Shape and Cutting Style	ROUND BRILLIANT
Measurements	10.84 - 10.86 X 6.57 MM
GRADING RESULTS	
Carat Weight	4.71 CARATS
Color Grade	G
Clarity Grade	VS 2
Cut Grade	IDEAL



ADDITIONAL GRADING INFORMATION

Polish	EXCELLENT
Symmetry	EXCELLENT
Fluorescence	NONE
Inscription(s)	153 LG620415071
<p>Comments: This Laboratory Grown Diamond was created by Chemical Vapor Deposition (CVD) growth process and may include post-growth treatment.</p> <p>Type IIa</p>	



February 5, 2024					
GJ Report No LG200415071					
GRIND BRILLIANT					
		10.84 - 10.96 X .657 MM			
		Carat Weight			
Color Grade	VS 2	Clarity Grade	Depth	Cut Grade	Table
4/71 CARATS	IDeal	60.5%	88%	Medium to Slightly Thick (Faceted)	Parked
					EXCELLENT
					EXCELLENT
					NONE
					#61 LG200415071
Comments:					
Treated by Chemical Vapor Deposition					
(CVD) growth process and may include post-growth treatment.					
Type IIA					