



ELECTRONIC COPY

LABORATORY GROWN DIAMOND REPORT

February 5, 2024	
IGI Report Number	LG620403957
Description	LABORATORY GROWN DIAMOND
Shape and Cutting Style	ROUND BRILLIANT
Measurements	9.97 - 10.05 X 6.15 MM

GRADING RESULTS

Carat Weight	3.81 CARATS
Color Grade	H
Clarity Grade	VS 2
Cut Grade	IDEAL

ADDITIONAL GRADING INFORMATION

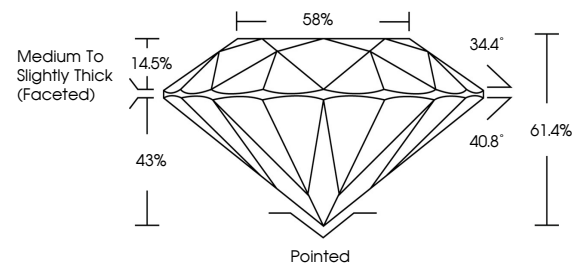
Polish	EXCELLENT
Symmetry	EXCELLENT
Fluorescence	NONE
Inscription(s)	 LG620403957

Comments: This Laboratory Grown Diamond was created by Chemical Vapor Deposition (CVD) growth process and may include post-growth treatment.
Type IIa

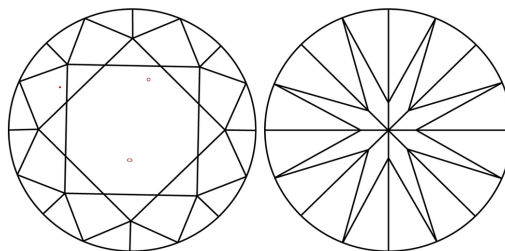
LABORATORY GROWN DIAMOND REPORT

LG620403957
Report verification at igi.org

PROPORTIONS



CLARITY CHARACTERISTICS



KEY TO SYMBOLS

Red symbols indicate internal characteristics.
Green symbols indicate external characteristics.

LABORATORY GROWN
DIAMOND REPORT

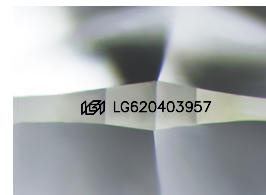
GRADING SCALES

CLARITY

IF	VVS ¹⁻²	VS ¹⁻²	SI ¹⁻²	I ¹⁻³
Internally Flawless	Very Very Slightly Included	Very Slightly Included	Slightly Included	Included

COLOR

D E F G H I J Faint Very Light Light



Sample Image Used



© IGI 2020, International Gemological Institute

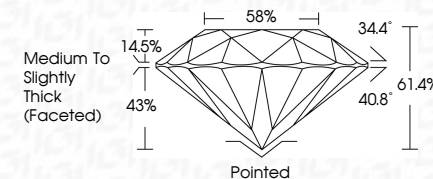
FD - 10 20

www.igi.org

LABORATORY GROWN DIAMOND REPORT

February 5, 2024	
IGI Report Number	LG620403957
Description	LABORATORY GROWN DIAMOND
Shape and Cutting Style	ROUND BRILLIANT
Measurements	9.97 - 10.05 X 6.15 MM

GRADING RESULTS	
Carat Weight	3.81 CARATS
Color Grade	H
Clarity Grade	VS 2
Cut Grade	IDEAL



ADDITIONAL GRADING INFORMATION

Polish	EXCELLENT
Symmetry	EXCELLENT
Fluorescence	NONE
Inscription(s)	(15) LG620403957

Comments: This Laboratory Grown Diamond was created by Chemical Vapor Deposition (CVD) growth process and may include post-growth treatment.
Type IIa



February 5, 2024	
GI Report No LG20403957	
GROW ROUND BRILLIANT	
97 - 10.05 X 6.15 MM	
Carat Weight	3.81 CARATS
Color Grade	H
Clarity Grade	VS 2
Cut Grade	IDEAL
Depth	61.4%
Table	88%
Girdle	Medium to Slightly Thick (Faceted)
Culet	Poished
Polish	EXCELLENT
Symmetry	B'CELENT
Fluorescence	NONE
Inscriptions(s)	#61 LG20403957
Comments:	
This Natural Growth Diamond was treated by Chemical Vapor Deposition (CVD) growth process and may include post-growth treatment.	
Type IIA	