

**ELECTRONIC COPY**

## LABORATORY GROWN DIAMOND REPORT

February 3, 2024	
IGI Report Number	LG620403941
Description	LABORATORY GROWN DIAMOND
Shape and Cutting Style	ROUND BRILLIANT
Measurements	9.29 - 9.36 X 5.74 MM

## GRADING RESULTS

Carat Weight	3.06 CARATS
Color Grade	G
Clarity Grade	VS 1
Cut Grade	IDEAL

### ADDITIONAL GRADING INFORMATION

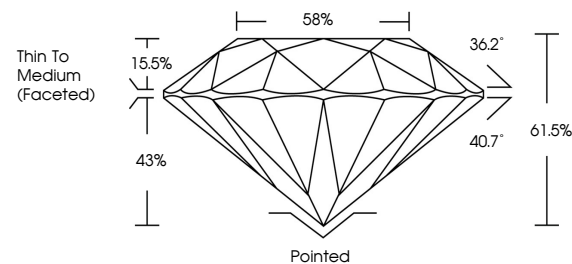
Polish	EXCELLENT
Symmetry	EXCELLENT
Fluorescence	NONE
Inscription(s)	 LG620403941

Comments: This Laboratory Grown Diamond was created by Chemical Vapor Deposition (CVD) growth process and may include post-growth treatment.  
Type IIa

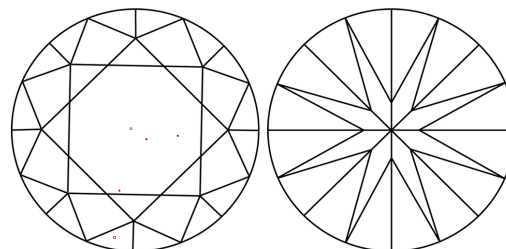
## LABORATORY GROWN DIAMOND REPORT

LG620403941  
Report verification at [igi.org](https://igi.org)

## PROPORTIONS



## CLARITY CHARACTERISTICS



## KEY TO SYMBOLS

Red symbols indicate internal characteristics.  
Green symbols indicate external characteristics.

LABORATORY GROWN  
DIAMOND REPORT

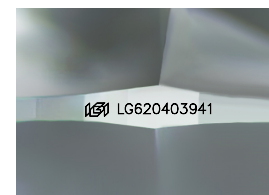
## GRADING SCALES

## CLARITY

IF	VVS <sup>1-2</sup>	VS <sup>1-2</sup>	SI <sup>1-2</sup>	I <sup>1-3</sup>
Internally Flawless	Very Very Slightly Included	Very Slightly Included	Slightly Included	Included

**COLOR**

D E F G H I J Faint Very Light Light



Sample Image Used



© IGI 2020, International Gemological Institute

FD - 10 20



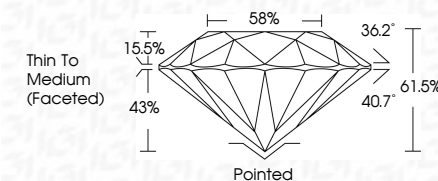
THIS DOCUMENT WAS PRODUCED WITH THE FOLLOWING SECURITY MEASURES: SPECIAL DOCUMENT PAPER, INK SCREENS, WATERMARK, BACKGROUND DESIGNS, HOLOGRAM AND OTHER SECURITY FEATURES NOT LISTED AND DO EXCEED DOCUMENT SECURITY INDUSTRY GUIDELINE

## LABORATORY GROWN DIAMOND REPORT

February 3, 2024	
IGI Report Number	LG620403941
Description	LABORATORY GROWN DIAMOND
Shape and Cutting Style	ROUND BRILLIANT
Measurements	9.29 - 9.36 X 5.74 MM

## GRADING RESULTS

Carat Weight	3.06 CARATS
Color Grade	G
Clarity Grade	VS 1
Cut Grade	IDEAL



### ADDITIONAL GRADING INFORMATION

Polish	EXCELLENT
Symmetry	EXCELLENT
Fluorescence	NONE
Inscription(s)	(15) LG620403941

Comments: This Laboratory Grown Diamond was created by Chemical Vapor Deposition (CVD) growth process and may include post-growth treatment.  
Type IIa



		February 3, 2024	
		GJ Report No LG62008941	
<b>ROUND BRILLIANT</b>			
		<b>3.06 CARATS</b>	
		<b>G</b>	
		<b>VSI</b>	
		<b>IDERAL</b>	
		<b>61.5%</b>	
		<b>68%</b>	
		<b>Thin To Medium Faceted)</b>	
	Culet	Poited	
	Flesh	EXCELLENT	
	Symmetry	EXCELLENT	
	Fluorescence	NONE	
	Inscriptions()	#61LG62008941	
<b>Comments:</b>			
This is a Heavy Crown Diamond was treated by Chemical Vapor Deposition (CVD) growth process and may include post-growth treatment.			
Type IIA			