



ELECTRONIC COPY

LABORATORY GROWN DIAMOND REPORT

February 2, 2024	
IGI Report Number	LG619433454
Description	LABORATORY GROWN DIAMOND
Shape and Cutting Style	ROUND BRILLIANT
Measurements	9.91 - 9.99 X 5.96 MM

GRADING RESULTS

Carat Weight	3.54 CARATS
Color Grade	G
Clarity Grade	VS 1
Cut Grade	IDEAL

ADDITIONAL GRADING INFORMATION

Polish	EXCELLENT
Symmetry	EXCELLENT
Fluorescence	NONE
Inscription(s)	 LG619433454

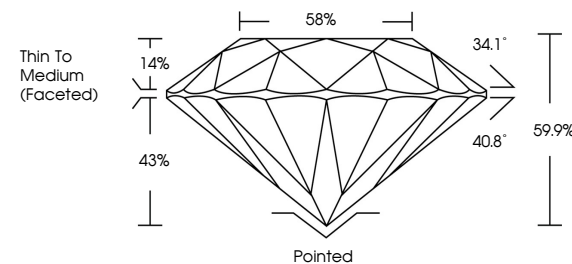
Comments: This Laboratory Grown Diamond was created by Chemical Vapor Deposition (CVD) growth process and may include post-growth treatment.
Type IIa

LABORATORY GROWN DIAMOND REPORT

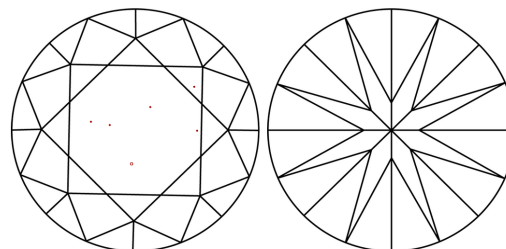
LG619433454

Report verification at igi.org

PROPORTIONS



CLARITY CHARACTERISTICS



KEY TO SYMBOLS

Red symbols indicate internal characteristics.
Green symbols indicate external characteristics.

LABORATORY GROWN
DIAMOND REPORT

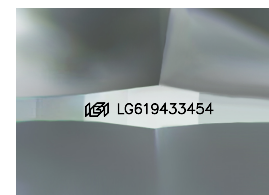
GRADING SCALES

CLARITY

IF	VVS ¹⁻²	VS ¹⁻²	SI ¹⁻²	I ¹⁻³
Internally Flawless	Very Very Slightly Included	Very Slightly Included	Slightly Included	Included

COLOR

D E F G H I J Faint Very Light Light



Sample Image Used



© IGI 2020, International Gemological Institute

FD - 10 20

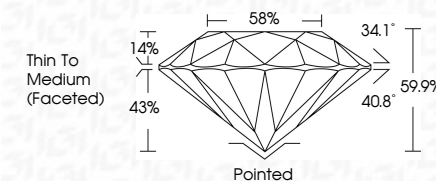
www.igi.org

LABORATORY GROWN DIAMOND REPORT

February 2, 2024	
IGI Report Number	LG619433454
Description	LABORATORY GROWN DIAMOND
Shape and Cutting Style	ROUND BRILLIANT
Measurements	9.91 - 9.99 X 5.96 MM

GRADING RESULTS

Carat Weight	3.54 CARATS
Color Grade	G
Clarity Grade	VS 1
Cut Grade	IDEAL



ADDITIONAL GRADING INFORMATION

Polish	EXCELLENT
Symmetry	EXCELLENT
Fluorescence	NONE
Inscription(s)	(16) LG619433454

Comments: This Laboratory Grown Diamond was created by Chemical Vapor Deposition (CVD) growth process and may include post-growth treatment.
Type IIa



February 2, 2024
GI Report No LG619433454
ROUND BRILLIANT

9.91 - 9.99 X 5.96 MM	Carat Weight	3.54 CARATS
	Color Grade	G
	Clarity Grade	VS 1
	Cut Grade	IDEAL
	Depth	69.9%
	Table	56%
	Girdle	Thin to Medium (faced)
	Culet	Pointed
	Polish	EXCELLENT
	Symmetry	EXCELLENT
	Fluorescence	NONE

Comments:
This Laboratory Grown Diamond was created by Chemical Vapor Deposition (CVD) growth process and may include post-growth treatment.

THIS DOCUMENT WAS PRODUCED WITH THE FOLLOWING SECURITY MEASURES: SPECIAL DOCUMENT PAPER, INK SCREENS, WATERMARK, BACKGROUND DESIGNS, HOLOGRAM AND OTHER SECURITY FEATURES NOT LISTED AND DO EXCEED DOCUMENT SECURITY INDUSTRY GUIDELINES