



ELECTRONIC COPY

LABORATORY GROWN DIAMOND REPORT

January 22, 2024	
IGI Report Number	LG618456564
Description	LABORATORY GROWN DIAMOND
Shape and Cutting Style	ROUND BRILLIANT
Measurements	10.17 - 10.26 X 6.35 MM

GRADING RESULTS

Carat Weight	4.10 CARATS
Color Grade	G
Clarity Grade	VVS 2
Cut Grade	IDEAL

ADDITIONAL GRADING INFORMATION

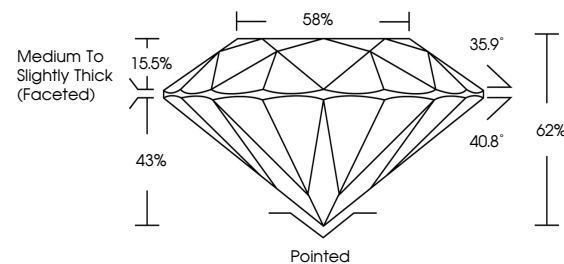
Polish	EXCELLENT
Symmetry	EXCELLENT
Fluorescence	NONE
Inscription(s)	 LG618456564

Comments: This Laboratory Grown Diamond was created by Chemical Vapor Deposition (CVD) growth process and may include post-growth treatment.
Type IIa

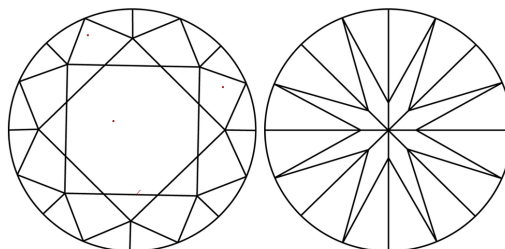
LABORATORY GROWN DIAMOND REPORT

LG618456564
Report verification at igi.org

PROPORTIONS



CLARITY CHARACTERISTICS



KEY TO SYMBOLS

Red symbols indicate internal characteristics.
Green symbols indicate external characteristics.

LABORATORY GROWN
DIAMOND REPORT

GRADING SCALES

CLARITY

IF	VVS ¹⁻²	VS ¹⁻²	SI ¹⁻²	I ¹⁻³
Internally Flawless	Very Very Slightly Included	Very Slightly Included	Slightly Included	Included

COLOR

D E F G H I J Faint Very Light Light



Sample Image Used



© IGI 2020, International Gemological Institute

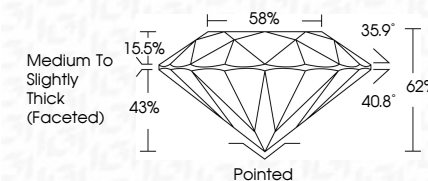
FD - 10 20

LABORATORY GROWN DIAMOND REPORT

January 22, 2024	
IGI Report Number	LG618456564
Description	LABORATORY GROWN DIAMOND
Shape and Cutting Style	ROUND BRILLIANT
Measurements	10.17 - 10.26 X 6.35 MM

GRADING RESULTS

Carat Weight	4.10 CARATS
Color Grade	G
Clarity Grade	VVS 2
Cut Grade	IDEAL



ADDITIONAL GRADING INFORMATION

Polish	EXCELLENT
Symmetry	EXCELLENT
Fluorescence	NONE
Inscription(s)	(15) LG618456554

Comments: This Laboratory Grown Diamond was created by Chemical Vapor Deposition (CVD) growth process and may include post-growth treatment.
Type IIa



January 22, 2024	410 CARATS	Color Grade	Clarity Grade	VVS 2	Polished
GI Report No. I561845554	Carat Weight	Cut Grade	Depth	IDEAL	EXCELLENT
ROUND BRILLIANT	10.17 - 10.26 X 6.32 MM	Table	Girdle	82%	EXCELLENT
				89%	NONE
				Medium to Slightly Thick (Faceted)	I561845554

Comments:
 Natural Colorless Round Diamond was treated by Chemical Vapor Deposition (CVD) growth process and may include post-growth treatment.
 Type IIA