



ELECTRONIC COPY

LABORATORY GROWN DIAMOND REPORT

January 20, 2024	
IGI Report Number	LG618438843
Description	LABORATORY GROWN DIAMOND
Shape and Cutting Style	ROUND BRILLIANT
Measurements	9.71 - 9.75 X 5.93 MM

GRADING RESULTS

Carat Weight	3.46 CARATS
Color Grade	F
Clarity Grade	VS 2
Cut Grade	IDEAL

ADDITIONAL GRADING INFORMATION

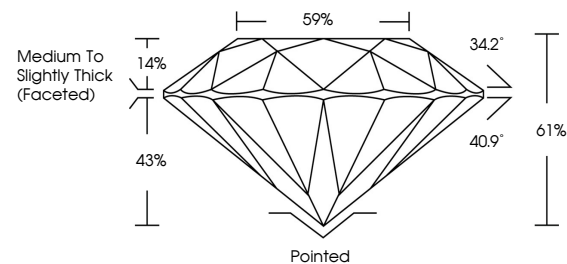
Polish	EXCELLENT
Symmetry	EXCELLENT
Fluorescence	NONE
Inscription(s)	 LG618438843

Comments: This Laboratory Grown Diamond was created by Chemical Vapor Deposition (CVD) growth process and may include post-growth treatment.
Type IIa

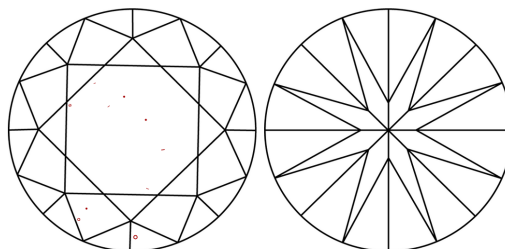
LABORATORY GROWN DIAMOND REPORT

LG618438843
Report verification at igi.org

PROPORTIONS



CLARITY CHARACTERISTICS



KEY TO SYMBOLS

Red symbols indicate internal characteristics.
Green symbols indicate external characteristics.

LABORATORY GROWN
DIAMOND REPORT

GRADING SCALES

CLARITY

IF	VVS ¹⁻²	VS ¹⁻²	SI ¹⁻²	I ¹⁻³
Internally Flawless	Very Very Slightly Included	Very Slightly Included	Slightly Included	Included

COLOR

D E F G H I J Faint Very Light Light



Sample Image Used



© IGI 2020, International Gemological Institute

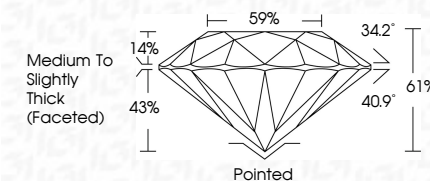
FD - 10 20

LABORATORY GROWN DIAMOND REPORT

January 20, 2024	
IGI Report Number	LG618438843
Description	LABORATORY GROWN DIAMOND
Shape and Cutting Style	ROUND BRILLIANT
Measurements	9.71 - 9.75 X 5.93 MM

GRADING RESULTS

Carat Weight	3.46 CARATS
Color Grade	F
Clarity Grade	VS 2
Cut Grade	IDEAL



ADDITIONAL GRADING INFORMATION

Polish	EXCELLENT
Symmetry	EXCELLENT
Fluorescence	NONE
Inscription(s)	(15) LG618438843

Comments: This Laboratory Grown Diamond was created by Chemical Vapor Deposition (CVD) growth process and may include post-growth treatment.
Type IIa



January 20, 2024	G1 Report No LC61843843	
SOUND BRILLIANT		
7.71 - 9.75 X 6.93 MM	3.66 CARATS	
Carat Weight	F	VS 2
Color Grade		IDEAL
		o1%
		69%
		Medium to Slightly Thick (Faceted)
Cut	Parked	
Polish	EXCELLENT	
Symmetry	EXCELLENT	
Fluorescence	NONE	
Inscriptions(s)	L6S1843843	
Comments: This is a Natural Growth Diamond was treated by Chemical Vapor Deposition (CVD) growth process and may include post-growth treatment. Type IIa		