



**INTERNATIONAL  
GEMOLOGICAL  
INSTITUTE**

**ELECTRONIC COPY**

## LABORATORY GROWN DIAMOND REPORT

|                         |                             |
|-------------------------|-----------------------------|
| January 17, 2024        |                             |
| IGI Report Number       | LG617487889                 |
| Description             | LABORATORY GROWN<br>DIAMOND |
| Shape and Cutting Style | ROUND BRILLIANT             |
| Measurements            | 10.36 - 10.42 X 6.17 MM     |

## GRADING RESULTS

|               |             |
|---------------|-------------|
| Carat Weight  | 4.02 CARATS |
| Color Grade   | G           |
| Clarity Grade | VS 1        |
| Cut Grade     | IDEAL       |

### ADDITIONAL GRADING INFORMATION

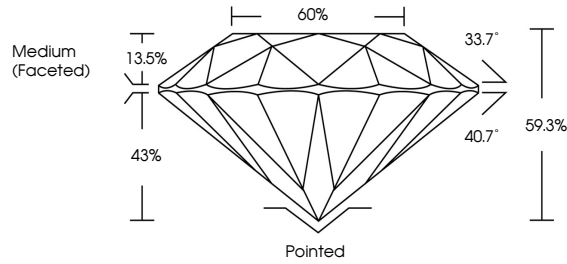
|                |   |
|----------------|---|
| Polish         | EXCELLENT   |
| Symmetry       | EXCELLENT   |
| Fluorescence   | NONE  |
| Inscription(s) |  LG617487889 |

Comments: This Laboratory Grown Diamond was created by Chemical Vapor Deposition (CVD) growth process and may include post-growth treatment.  
Type IIa

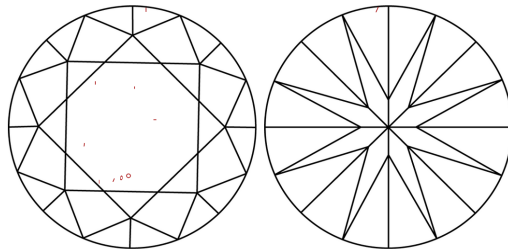
## LABORATORY GROWN DIAMOND REPORT

LG617487889  
Report verification at [igi.org](https://www.igi.org)

## PROPORTIONS



## CLARITY CHARACTERISTICS



## KEY TO SYMBOLS

Red symbols indicate internal characteristics.  
Green symbols indicate external characteristics.

LABORATORY GROWN  
DIAMOND REPORT

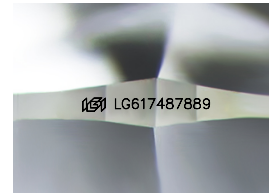
## GRADING SCALES

## CLARITY

| IF                     | VVS <sup>1-2</sup>             | VS <sup>1-2</sup>         | SI <sup>1-2</sup>    | I <sup>1-3</sup> |
|------------------------|--------------------------------|---------------------------|----------------------|------------------|
| Internally<br>Flawless | Very Very<br>Slightly Included | Very<br>Slightly Included | Slightly<br>Included | Included         |

**COLOR**

|   |   |   |   |   |   |   |       |            |       |
|---|---|---|---|---|---|---|-------|------------|-------|
| D | E | F | G | H | I | J | Faint | Very Light | Light |
|---|---|---|---|---|---|---|-------|------------|-------|



Sample Image Used



© IGI 2020, International Gemological Institute

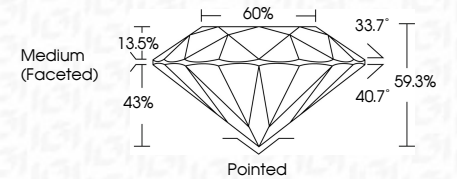
FD - 10 20

## LABORATORY GROWN DIAMOND REPORT

|                         |                             |
|-------------------------|-----------------------------|
| January 17, 2024        |                             |
| IGI Report Number       | LG617487889                 |
| Description             | LABORATORY GROWN<br>DIAMOND |
| Shape and Cutting Style | ROUND BRILLIANT             |
| Measurements            | 10.36 - 10.42 X 6.17 MM     |

## GRADING RESULTS

|               |             |
|---------------|-------------|
| Carat Weight  | 4.02 CARATS |
| Color Grade   | G           |
| Clarity Grade | VS 1        |
| Cut Grade     | IDEAL       |



### ADDITIONAL GRADING INFORMATION

|  |   |
|--|---|
| Polish   | EXCELLENT   |
| Symmetry   | EXCELLENT   |
| Fluorescence   | NONE  |
| Inscription(s)   |  LG617487889 |
| Comments: This Laboratory Grown Diamond was created by Chemical Vapor Deposition (CVD) growth process and may include post-growth treatment. |   |
| Type IIa   |   |



IGI

|  |                         |   |  |  |
|--|-------------------------|---|--|--|
| January 17, 2024                           | 402 CARATS              | VS 1<br>IDEAL<br>59.5%<br>60%<br>Medium (Faceted) | Pointed<br>EXCELLENT<br>EXCELLENT<br>NONE<br>gsm 1.641748789 | Comments:<br>This Laboratory Grown Diamond was created by Chemical Vapor Deposition (CVD) growth process and may include post-growth treatment.<br>type Ia |
| G Report No. G561748789<br>ROUND BRILLIANT | 10.36 - 10.42 X 6.17 MM |   |  |  |
|  | Carat Weight            | Color Grade                                       |  |  |
|  | Color Grade             | Clarity Grade                                     |  |  |
|  | Car Grade               | Car Grade   |  |  |
|  | Depth                   | Table   |  |  |
|  | G/Grade                 |   |  |  |
|  | Culet                   |   |  |  |
|  | Polish                  |   |  |  |
|  | Symmetry                |   |  |  |
|  | Fluorescence            |   |  |  |
|  | Inscription(s)          |   |  |  |

**www.igi.org**

THIS DOCUMENT WAS PRODUCED WITH THE FOLLOWING SECURITY MEASURES: SPECIAL DOCUMENT PAPER, INK SCREENS, WATERMARK BACKGROUND DESIGNS, HOLOGRAM AND OTHER SECURITY FEATURES NOT LISTED AND DO EXCEED DOCUMENT SECURITY INDUSTRY GUIDELINES