

ELECTRONIC COPY

LABORATORY GROWN DIAMOND REPORT

January 10, 2024	
IGI Report Number	LG616422763
Description	LABORATORY GROWN DIAMOND
Shape and Cutting Style	ROUND BRILLIANT
Measurements	9.22 - 9.28 X 5.78 MM

GRADING RESULTS

Carat Weight	3.04 CARATS
Color Grade	G
Clarity Grade	VS 1
Cut Grade	IDEAL

ADDITIONAL GRADING INFORMATION

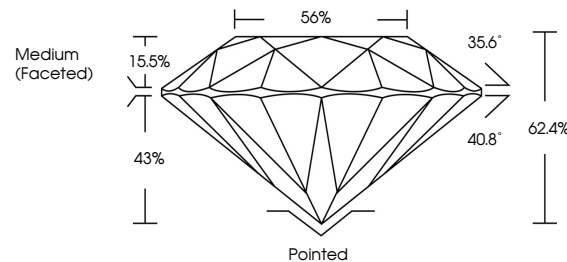
Polish	EXCELLENT
Symmetry	EXCELLENT
Fluorescence	NONE
Inscription(s)	15 LG616422763

Comments: This Laboratory Grown Diamond was created by Chemical Vapor Deposition (CVD) growth process and may include post-growth treatment.
Type IIa

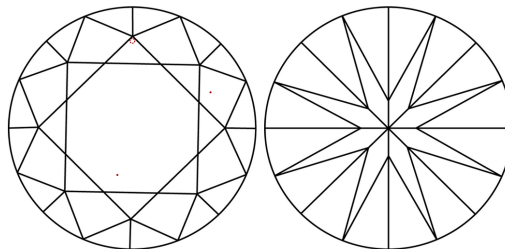
LABORATORY GROWN DIAMOND REPORT

LG616422763
Report verification at igi.org

PROPORTIONS



CLARITY CHARACTERISTICS



KEY TO SYMBOLS

Red symbols indicate internal characteristics.
Green symbols indicate external characteristics.

LABORATORY GROWN
DIAMOND REPORT

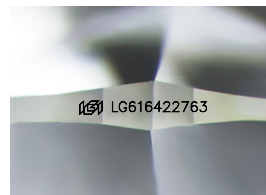
GRADING SCALES

CLARITY

IF	VVS ¹⁻²	VS ¹⁻²	SI ¹⁻²	I ¹⁻³
Internally Flawless	Very Very Slightly Included	Very Slightly Included	Slightly Included	Included

COLOR

D E F G H I J Faint Very Light Light



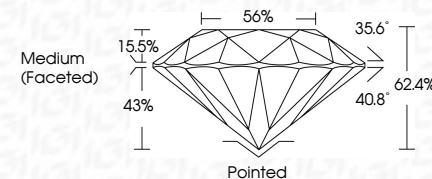
Sample Image Used

LABORATORY GROWN DIAMOND REPORT


January 10, 2024	
IGI Report Number	LG616422763
Description	LABORATORY GROWN DIAMOND
Shape and Cutting Style	ROUND BRILLIANT
Measurements	9.22 - 9.28 X 5.78 MM

GRADING RESULTS

Carat Weight	3.04 CARATS
Color Grade	G
Clarity Grade	VS 1
Cut Grade	IDEAL



ADDITIONAL GRADING INFORMATION

Polish	EXCELLENT
Symmetry	EXCELLENT
Fluorescence	NONE
Inscription(s)	 LG616422763
<p>Comments: This Laboratory Grown Diamond was created by Chemical Vapor Deposition (CVD) growth process and may include post-growth treatment.</p> <p>Type IIa</p>	



IG



© IGI 2020, International Gemological Institute

FD - 10 20

January 10, 2024
GI Report No LG616422763
ROUND BRILLIANT

7.22 - 9.28 X 5.78 MM	3.04 CARATS	
Carat Weight	VS 1	Pointed
Color Grade	IDEAL	EXCELLENT
Clarity Grade	62.4%	EXCELLENT
Cut Grade	56%	NONE
Depth	Medium (Faceted)	
Table		
Grade		
Culet		
Polish		
Symmetry		
Fluorescence		

Comments:
This Laboratory Grown Diamond was created by Chemical Vapor Deposition (CVD) growth process and may include post-growth treatment.