

ELECTRONIC COPY

LABORATORY GROWN DIAMOND REPORT

| | |
|-------------------------|-----------------------------|
| January 10, 2024 | |
| IGI Report Number | LG616421511 |
| Description | LABORATORY GROWN DIAMOND |
| Shape and Cutting Style | ROUND BRILLIANT |
| Measurements | 10.27 - 10.32 X 6.26 MM |

GRADING RESULTS

| | |
|---------------|-------------|
| Carat Weight | 4.06 CARATS |
| Color Grade | G |
| Clarity Grade | VS 1 |
| Cut Grade | IDEAL |

ADDITIONAL GRADING INFORMATION

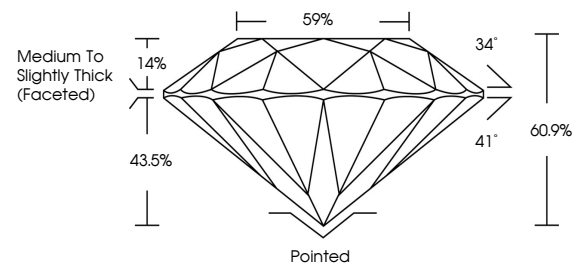
| | |
|----------------|---|
| Polish | EXCELLENT |
| Symmetry | EXCELLENT |
| Fluorescence | NONE |
| Inscription(s) |  LG616421511 |

Comments: This Laboratory Grown Diamond was created by Chemical Vapor Deposition (CVD) growth process and may include post-growth treatment.
Type IIa

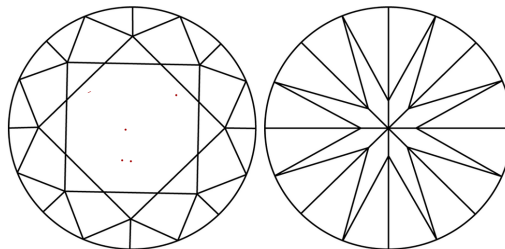
LABORATORY GROWN DIAMOND REPORT

LG616421511
Report verification at igi.org

PROPORTIONS



CLARITY CHARACTERISTICS



KEY TO SYMBOLS

Red symbols indicate internal characteristics.
Green symbols indicate external characteristics.

LABORATORY GROWN
DIAMOND REPORT

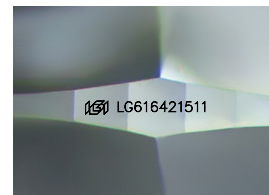
GRADING SCALES

CLARITY

| IF | VVS ¹⁻² | VS ¹⁻² | SI ¹⁻² | I ¹⁻³ |
|---------------------|-----------------------------|------------------------|-------------------|------------------|
| Internally Flawless | Very Very Slightly Included | Very Slightly Included | Slightly Included | Included |

COLOR

D E F G H I J Faint Very Light Light



Sample Image Used



© IGI 2020, International Gemological Institute

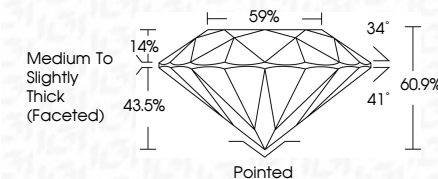
FD - 10 20

LABORATORY GROWN DIAMOND REPORT

| | |
|-------------------------|-----------------------------|
| January 10, 2024 | |
| IGI Report Number | LG616421511 |
| Description | LABORATORY GROWN DIAMOND |
| Shape and Cutting Style | ROUND BRILLIANT |
| Measurements | 10.27 - 10.32 X 6.26 MM |

GRADING RESULTS

| | |
|---------------|-------------|
| Carat Weight | 4.06 CARATS |
| Color Grade | G |
| Clarity Grade | VS 1 |
| Cut Grade | IDEAL |



ADDITIONAL GRADING INFORMATION

| | |
|----------------|-----------------|
| Polish | EXCELLENT |
| Symmetry | EXCELLENT |
| Fluorescence | NONE |
| Inscription(s) | 151 LG616421511 |

Comments: This Laboratory Grown Diamond was created by Chemical Vapor Deposition (CVD) growth process and may include post-growth treatment.
Type IIa



| |
|--|
| January 10, 2024 |
| GJ Report No L6616421811 |
| ROUND BRILLIANT |
| 10.27 - 10.32 X 6.26 MM |
| Carat Weight 4.06 CARATS G |
| Color Grade VS 1 IDEAL |
| Clarity Grade 60/VS |
| Cut Grade 99% |
| Depth Midpoint to Slightly Thick Faceted) |
| Diamond Shape Polished |
| Symmetry EXCELLENT |
| Fluorescence EXCELLENT |
| Inscriptions(s) NONE |
| Laser/Lab#L6616421811 |
| Comments: This was created by Crown Diamond via CVD growth process and may include post-growth treatment. Type IIA |