

ELECTRONIC COPY

LABORATORY GROWN DIAMOND REPORT

January 2, 2024	
IGI Report Number	LG615340928
Description	LABORATORY GROWN DIAMOND
Shape and Cutting Style	ROUND BRILLIANT
Measurements	9.86 - 9.92 X 6.18 MM

GRADING RESULTS

Carat Weight	3.69 CARATS
Color Grade	F
Clarity Grade	SI 1
Cut Grade	IDEAL

ADDITIONAL GRADING INFORMATION

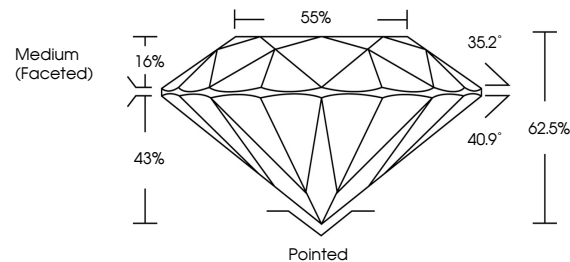
Polish	EXCELLENT
Symmetry	EXCELLENT
Fluorescence	NONE
Inscription(s)	15 LG615340928

Comments: This Laboratory Grown Diamond was created by Chemical Vapor Deposition (CVD) growth process and may include post-growth treatment.
Type IIa

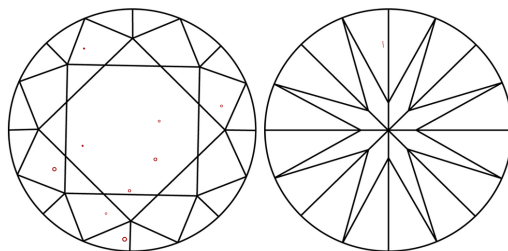
LABORATORY GROWN DIAMOND REPORT

LG615340928
Report verification at igi.org

PROPORTIONS



CLARITY CHARACTERISTICS



KEY TO SYMBOLS

Red symbols indicate internal characteristics.
Green symbols indicate external characteristics.

LABORATORY GROWN
DIAMOND REPORT

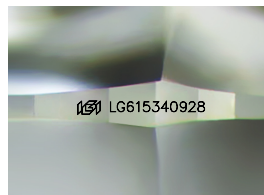
GRADING SCALES

CLARITY

IF	VVS ¹⁻²	VS ¹⁻²	SI ¹⁻²	I ¹⁻³
Internally Flawless	Very Very Slightly Included	Very Slightly Included	Slightly Included	Included

COLOR

D E F G H I J Faint Very Light Light



Sample Image Used



© IGI 2020, International Gemological Institute

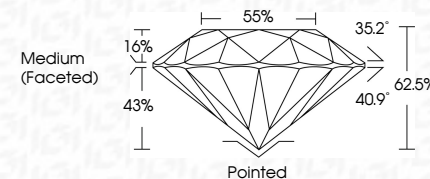
FD - 10 20

LABORATORY GROWN DIAMOND REPORT

January 2, 2024	
IGI Report Number	LG615340928
Description	LABORATORY GROWN DIAMOND
Shape and Cutting Style	ROUND BRILLIANT
Measurements	9.86 - 9.92 X 6.18 MM

GRADING RESULTS

Carat Weight	3.69 CARATS
Color Grade	F
Clarity Grade	SI 1
Cut Grade	IDEAL



ADDITIONAL GRADING INFORMATION

Polish	EXCELLENT
Symmetry	EXCELLENT
Fluorescence	NONE
Inscription(s)	 LG615340928

Comments: This Laboratory Grown Diamond was created by Chemical Vapor Deposition (CVD) growth process and may include post-growth treatment.
Type IIa



January 2, 2024	GI Report No LG515340228	3.49 CARATS	S I 1	Pointed	Comments: This Heavy Chemical Diamond was created by Atomic Vapor Deposition (AVD) growth process and may include post-growth treatment. Type IIa
ROUND BRILLIANT			IDEAL	EXCELLENT	
			62.5%	EXCELLENT	
			55%	NONE	
			Medium Faceted	IGI LG515340228	
9.85 - 9.92 X 6.18 MM	Color Weight	Color Grade	Clarity Grade	Cut Grade	
				Depth	
				Table	
				Girdle	
				Culet	
				Polish	
				Symmetry	
				Fluorescence	
				Inscriptions(s)	