



ELECTRONIC COPY

LABORATORY GROWN DIAMOND REPORT

January 3, 2024	
IGI Report Number	LG614398617
Description	LABORATORY GROWN DIAMOND
Shape and Cutting Style	ROUND BRILLIANT
Measurements	10.41 - 10.47 X 6.30 MM

GRADING RESULTS

Carat Weight	4.17 CARATS
Color Grade	G
Clarity Grade	VS 2
Cut Grade	IDEAL

ADDITIONAL GRADING INFORMATION

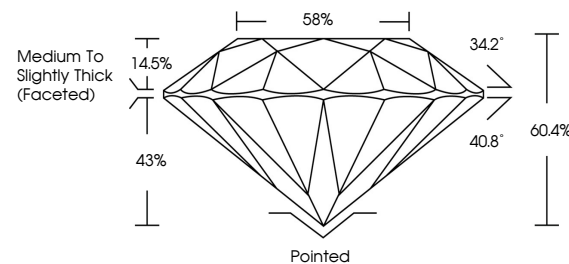
Polish	EXCELLENT
Symmetry	EXCELLENT
Fluorescence	NONE
Inscription(s)	 LG614398617

Comments: This Laboratory Grown Diamond was created by Chemical Vapor Deposition (CVD) growth process and may include post-growth treatment.
Type IIa

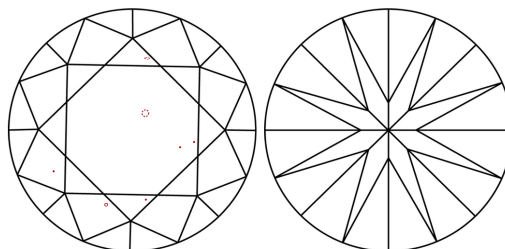
LABORATORY GROWN DIAMOND REPORT

LG614398617
Report verification at iqi.org

PROPORTIONS



CLARITY CHARACTERISTICS



KEY TO SYMBOLS

Red symbols indicate internal characteristics.
Green symbols indicate external characteristics.

LABORATORY GROWN
DIAMOND REPORT

GRADING SCALES

CLARITY

IF	VVS ¹⁻²	VS ¹⁻²	SI ¹⁻²	I ¹⁻³
Internally Flawless	Very Very Slightly Included	Very Slightly Included	Slightly Included	Included

COLOR

D E F G H I J Faint Very Light Light



Sample Image Used



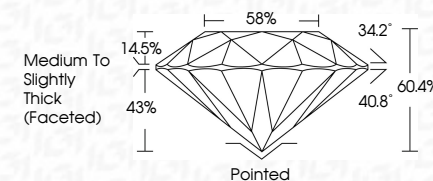
© IGI 2020, International Gemological Institute

FD - 10 20

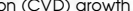
www.igi.org

LABORATORY GROWN DIAMOND REPORT

January 3, 2024	
IGI Report Number	LG614398617
Description	LABORATORY GROWN DIAMOND
Shape and Cutting Style	ROUND BRILLIANT
Measurements	10.41 - 10.47 X 6.30 MM
GRADING RESULTS	
Carat Weight	4.17 CARATS
Color Grade	G
Clarity Grade	VS 2
Cut Grade	IDEAL



ADDITIONAL GRADING INFORMATION

Polish	EXCELLENT
Symmetry	EXCELLENT
Fluorescence	NONE
Inscription(s)	 LG614398617
<p>Comments: This Laboratory Grown Diamond was created by Chemical Vapor Deposition (CVD) growth process and may include post-growth treatment.</p> <p>Type IIa</p>	



January 3, 2024	4.17 CARATS
G Report No. LG514596617	G
ROUND BRILLIANT	VS 2
	IDEAL
	60.4%
	58%
	Medium To Slightly Thick (focused)
	Painted
	EXCELLENT
	EXCELLENT
	NONE
	69 LG514596617
Carat Weight	
Color Grade	
Clarity Grade	
Cut Grade	
Depth	
Table	
Grain	
Clue	
Polish	
Symmetry	
Fluorescence	
Inscriptions(s)	
Comments:	
	The Laboratory Grown Diamond was created by Chemical Vapor Deposition and may include post-growth treatment.
	Type Iia