

ELECTRONIC COPY

LABORATORY GROWN DIAMOND REPORT

December 27, 2023	
IGI Report Number	LG614312834
Description	LABORATORY GROWN DIAMOND
Shape and Cutting Style	ROUND BRILLIANT
Measurements	9.97 - 10.04 X 6.26 MM

GRADING RESULTS

Carat Weight	3.87 CARATS
Color Grade	G
Clarity Grade	VS 1
Cut Grade	EXCELLENT

ADDITIONAL GRADING INFORMATION

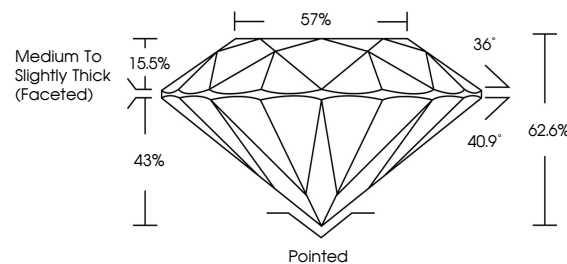
Polish	EXCELLENT
Symmetry	EXCELLENT
Fluorescence	NONE
Inscription(s)	15 LG614312834

Comments: This Laboratory Grown Diamond was created by Chemical Vapor Deposition (CVD) growth process and may include post-growth treatment.
Type IIa

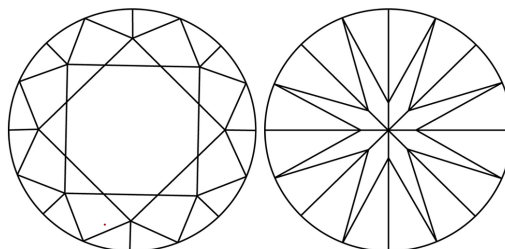
LABORATORY GROWN DIAMOND REPORT

LG614312834
Report verification at lgi.org

PROPORTIONS



CLARITY CHARACTERISTICS



KEY TO SYMBOLS

Red symbols indicate internal characteristics.
Green symbols indicate external characteristics.

LABORATORY GROWN
DIAMOND REPORT

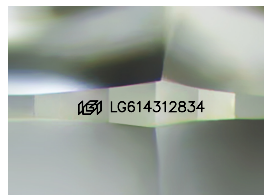
GRADING SCALES

CLARITY

IF	VVS ¹⁻²	VS ¹⁻²	SI ¹⁻²	I ¹⁻³
Internally Flawless	Very Very Slightly Included	Very Slightly Included	Slightly Included	Included

COLOR

D E F G H I J Faint Very Light Light



Sample Image Used

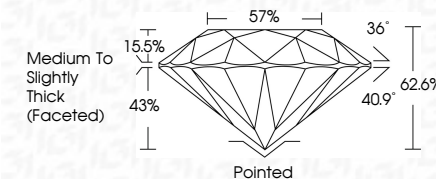


© IGI 2020, International Gemological Institute


FD - 10 20



December 27, 2023	
IGI Report Number	LG614312834
Description	LABORATORY GROWN DIAMOND
Shape and Cutting Style	ROUND BRILLIANT
Measurements	9.97 - 10.04 X 6.26 MM
GRADING RESULTS	
Carat Weight	3.87 CARATS
Color Grade	G
Clarity Grade	VS 1
Cut Grade	EXCELLENT



ADDITIONAL GRADING INFORMATION

Polish	EXCELLENT
Symmetry	EXCELLENT
Fluorescence	NONE
Inscription(s)	 LG614312834
<p>Comments: This Laboratory Grown Diamond was created by Chemical Vapor Deposition (CVD) growth process and may include post-growth treatment.</p> <p>Type Ila</p>	

December 27, 2023	Color Weight	3.67 CARATS
GR Report No. LG14312834	Color Grade	G
ROUND BRILLIANT	Clarity Grade	VS 1
	Cut Grade	EXCELLENT
	Depth	62.6%
	Table	57%
	Grade	Medium to Slightly Thick (Faceted)
	Culet	Pointed
	Poleish	EXCELLENT
	Symmetry	EXCELLENT
	Fluorescence	NONE
	Inscriptions(s)	1691 LG14312834

Comments:

The Laboratory Grown Diamond was created by Chemical Vapor Deposition (CVD) and may include growth treatment and may include type IIa.