

ELECTRONIC COPY

LABORATORY GROWN DIAMOND REPORT

September 3, 2023	
IGI Report Number	LG598339721
Description	LABORATORY GROWN DIAMOND
Shape and Cutting Style	ROUND BRILLIANT
Measurements	7.05 - 7.07 X 4.29 MM

GRADING RESULTS

Carat Weight	1.31 CARAT
Color Grade	H
Clarity Grade	VS 1
Cut Grade	IDEAL

ADDITIONAL GRADING INFORMATION

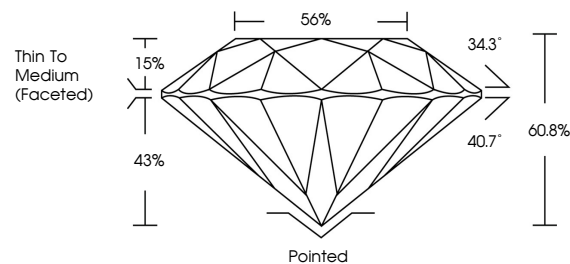
Polish	EXCELLENT
Symmetry	EXCELLENT
Fluorescence	NONE
Inscription(s)	15 LG598339721

Comments: This Laboratory Grown Diamond was created by Chemical Vapor Deposition (CVD) growth process and may include post-growth treatment.
Type IIa

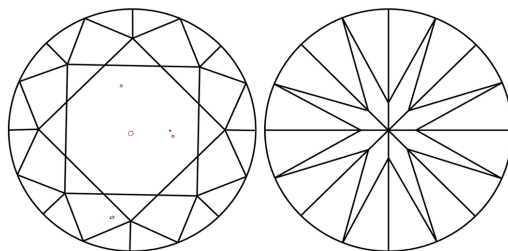
LABORATORY GROWN DIAMOND REPORT

LG598339721
Report verification at igi.org

PROPORTIONS



CLARITY CHARACTERISTICS



KEY TO SYMBOLS

Red symbols indicate internal characteristics.
Green symbols indicate external characteristics.

LABORATORY GROWN
DIAMOND REPORT

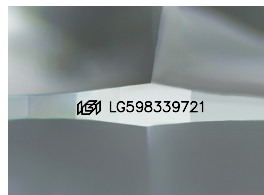
GRADING SCALES

CLARITY

IF	VVS ¹⁻²	VS ¹⁻²	SI ¹⁻²	I ¹⁻³
Internally Flawless	Very Very Slightly Included	Very Slightly Included	Slightly Included	Included

COLOR

D E F G H I J Faint Very Light Light



Sample Image Used



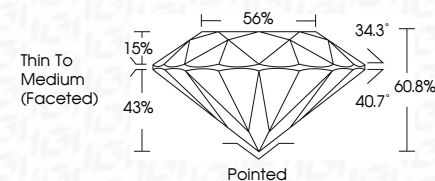
© IGI 2020, International Gemological Institute

FD - 10 20


LABORATORY GROWN DIAMOND REPORT

September 3, 2023	
IGI Report Number	LG598339721
Description	LABORATORY GROWN DIAMOND
Shape and Cutting Style	ROUND BRILLIANT
Measurements	7.05 - 7.07 X 4.29 MM

GRADING RESULTS	
Carat Weight	1.31 CARAT
Color Grade	H
Clarity Grade	VS 1
Cut Grade	IDEAL



ADDITIONAL GRADING INFORMATION

Polish	EXCELLENT
Symmetry	EXCELLENT
Fluorescence	NONE
Inscription(s)	 LG598339721
<p>Comments: This Laboratory Grown Diamond was created by Chemical Vapor Deposition (CVD) growth process and may include post-growth treatment.</p> <p>Type IIa</p>	



IG

Sepember 3, 2023	
IGI Report No [G59839721]	
ROUND BRILLIANT	
7.05 - 7.07 X 4.29 MM	
Color Weight	H
Color Grade	Vs1
Clarity Grade	IDEAL
Cut Grade	60.6%
Depth	56%
Table	Thin To Medium
Girdle	(Faceted)
Culet	Pointed
Pavil.	EXCELLENT
Symmetry	EXCELLENT
Fluorescence	NONE
Inscriptions(s)	#69 [G59839721]
Comments:	
	This is a Chemically Grown Diamond was created by Chemical Vapor Deposition (CVD) growth process and may include post-growth treatment.
Type IIC	